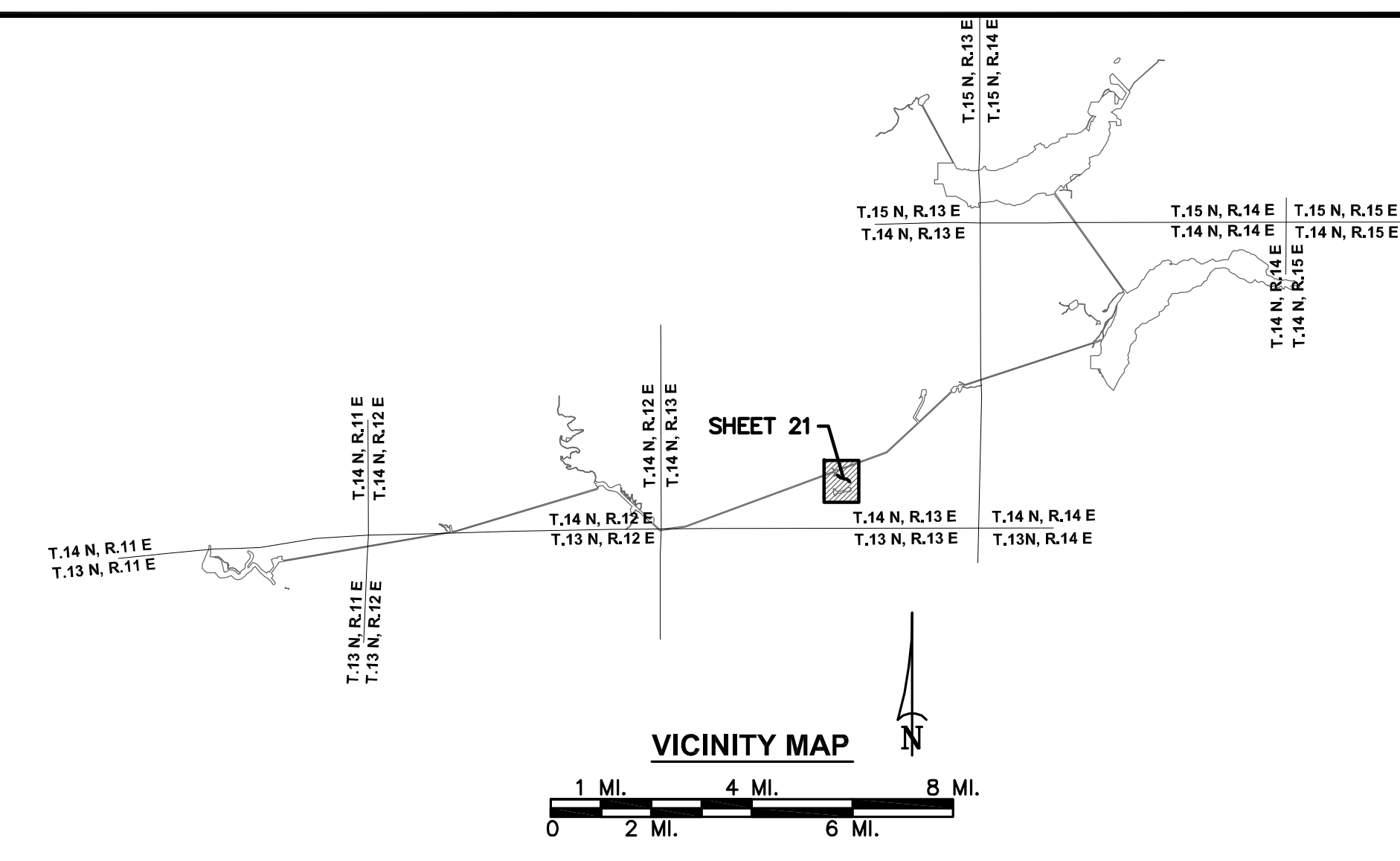
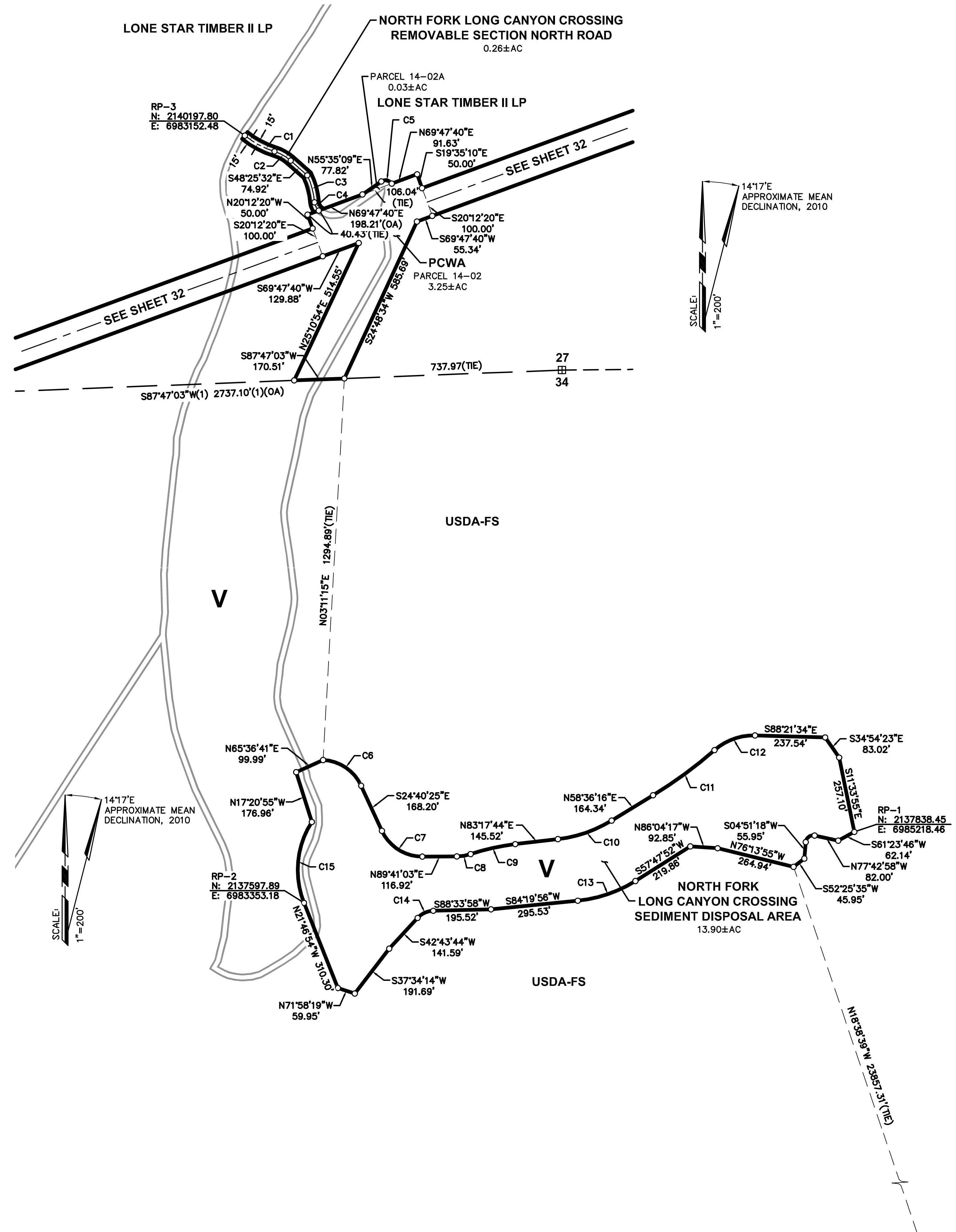


CURVE TABULATION

NO.	RADIUS	DELTA	LENGTH	BEARING	DIST
C1	300.00	21°52'30"	114.54'	S61°51'43"E	113.84'
C2	150.00	24°22'27"	63.81'	N60°36'45"W	63.33'
C3	250.00	21°52'33"	95.45'	N15°03'21"W	94.87'
C4	40.00	45°45'28"	31.94'	S26°59'49"E	31.10'
C5	25.00	92°21'21"	40.30'	N78°14'10"W	36.07'
C6	150.00	62°30'33"	163.65'	N55°55'41"W	155.65'
C7	150.00	65°38'32"	171.85'	S57°29'41"E	162.61'
C8	150.00	18°15'19"	47.79'	N80°33'24"E	47.59'
C9	750.00	11°52'00"	155.33'	S77°21'44"W	155.06'
C10	450.00	24°41'28"	193.92'	N70°57'00"E	192.43'
C11	1500.00	9°52'49"	258.67'	N53°39'51"E	258.35'
C12	200.00	42°55'00"	149.81'	S70°10'56"W	146.33'
C13	25.00	97°25'44"	42.51'	S53°34'10"W	37.57'
C14	450.00	26°32'05"	208.40'	N71°03'54"E	206.54'
C15	75.00	45°50'14"	60.00'	S65°38'51"W	58.41'
C16	300.00	54°38'18"	286.09'	S05°32'15"W	275.37'
C17	30.00	60°42'37"	31.79'	S77°13'52"W	30.32'
C18	20.00	53°39'07"	18.73'	N80°45'37"E	18.05'
C19	65.00	27°50'00"	31.58'	N40°01'03"E	31.27'
C20	15.00	54°24'55"	14.25'	S53°18'30"W	13.72'
C21	15.00	28°22'40"	7.43'	N66°19'38"E	7.35'
C22	15.00	68°37'54"	17.97'	S86°27'15"W	16.91'



- LEGEND**
- PROJECT BOUNDARY
 - RESERVOIR STORAGE STAGE
 - TUNNEL (WITH SHAFT)
 - SECTION LINE, ESTABLISHED
 - SECTION LINE, PROTRACTED
 - SUBDIVISION LINE, GOVERNMENT LAND SURVEY
 - ◆ SECTION CORNER, FOUND
 - ◇ SECTION CORNER, RECORD
 - 1/4 CORNER, FOUND
 - 1/4 CORNER, RECORD
 - COUNTY LINE
 - U.S. FOREST BOUNDARY
 - PROJECT BOUNDARY CORNER
 - (OA) OVERALL DIMENSION
 - RP REFERENCE POINT
 - V PUBLIC LAND
 - ROAD
 - BRIDGE
 - RIVER OR PERENNIAL STREAM
 - INTERMITTENT STREAM
 - SPRING
 - W/L 6.5' POND OR LAKE, WATER LEVEL JULY 1961
 - TREES OR BRUSH
 - STREAM FLOW GAGING STATION
 - WATER SURFACE GAGING STATION
 - CAMPGROUND
 - BUILDING
 - GOVERNMENT BENCH MARK
 - BENCH MARK RELOCATION
 - PHOTOGRAMMETRIC PRINCIPAL POINT
 - TRIANGULATION STATION
 - 41212 FIELD ESTABLISHED ELEVATION
 - x 97 PHOTOGRAMMETRIC ELEVATION
 - M R O MINERAL RIGHTS ONLY
 - (1) RECORD PER 2 ROS 78

SURVEYOR'S STATEMENT

I CERTIFY THAT I SUPERVISED THE SURVEY OF THE PROJECT LANDS; THAT THE PROJECT BOUNDARY DELINEATION FOR THE MIDDLE FORK AMERICAN RIVER PROJECT AS SHOWN ON THIS EXHIBIT "G" IS DEVELOPED WITHIN REASONABLE ACCURACIES AS REQUIRED IN 18CFR4.39 & 18CFR4.41 TO THE GEOGRAPHIC LOCATION. THIS EXHIBIT IS BASED UPON MAPS OF THE EXHIBIT "K", SHEET 25 OF THE MIDDLE FORK AMERICAN RIVER PROJECT NO.2079 AND BOOK 2 SURVEY'S PAGE 78 OFFICIAL RECORDS OF PLACER COUNTY AND CORRECTLY SHOWN HEREON. SEE CONTROL SCHEME FOR DETAILS OF THE BOUNDARY DELINEATION AND DATA ACQUISITION.

ANDREGG GEOMATICS

NOTES

ALL FACILITIES AND FEATURES SHOWN HERE ON ARE PER DATA COLLECTED BY OTHERS.

REFERENCE POINT COORDINATES

NAD83 CALIFORNIA STATE PLANE COORDINATE SYSTEM ZONE II (CCS83, ZONE 2); U.S. SURVEY FEET

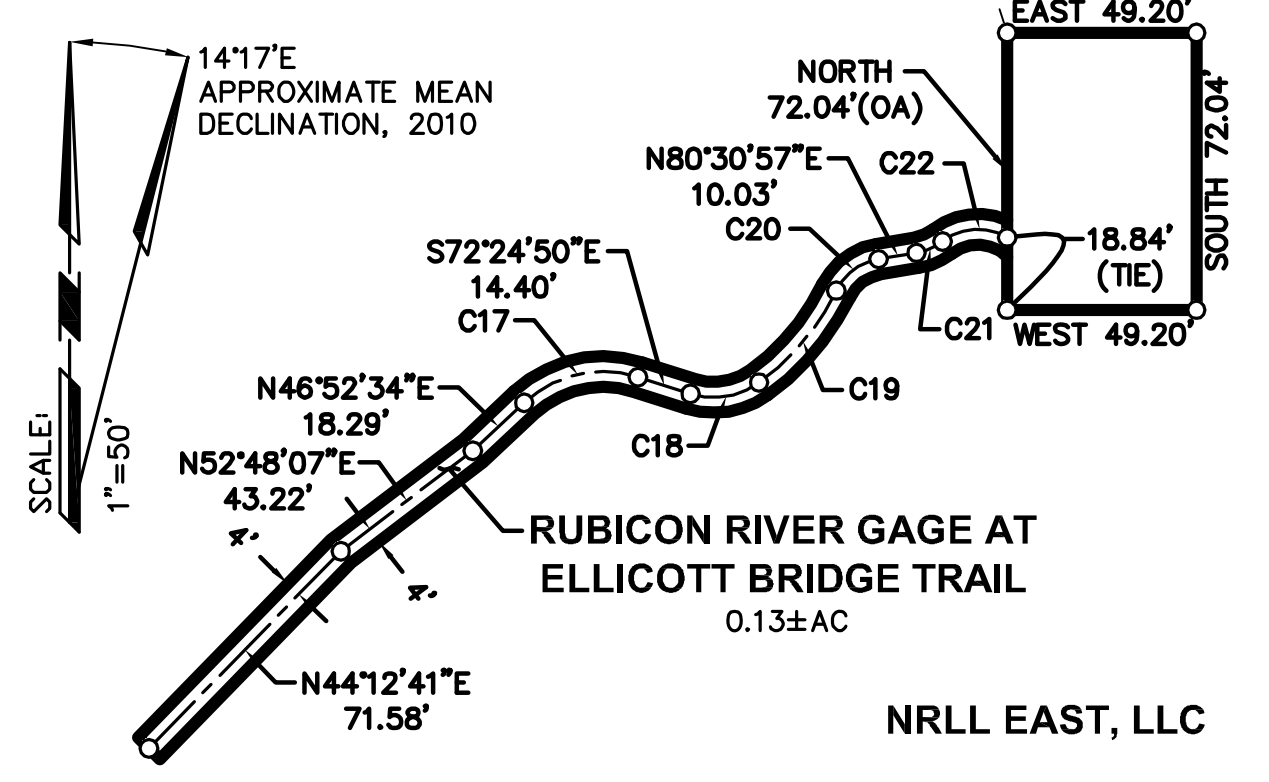


EXHIBIT 'G' PROJECT 2079
MIDDLE FORK AMERICAN RIVER PROJECT
NORTH FORK LONG CANYON CROSSING
 A PORTION OF SECTIONS 23, T.13N., R.13 E.
 AND SECTIONS 27 & 34, T.14 N., R.13 E., M.D.M.
 PLACER COUNTY, CALIFORNIA
 SCALE: 1"=200' SEPTEMBER 24, 2010

ANDREGG GEOMATICS
 001-406-7272

50 100 200 400 600
 0 2 4 6 8 MI.

SHEET 21 OF 33

PROFESSIONAL LAND SURVEYOR
 DENNIS G. MEYER
 LS 4751
 EXPIRES: SEPT. 30, 2011
 STATE OF CALIFORNIA

DENNIS G. MEYER, LS 4751 DATE _____
 LICENSE EXPIRES: 9/30/11